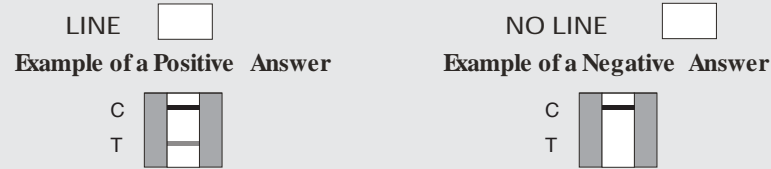
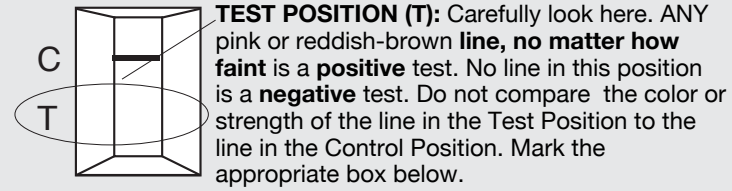


## Interpret the Test Results

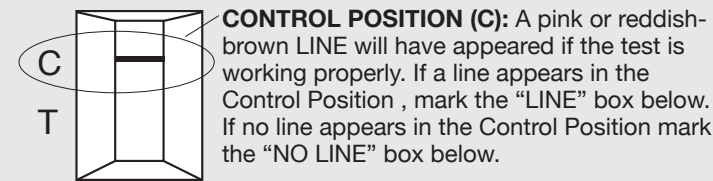
7. After 5 minutes but no later than 6 minutes, read and record the answer.



ANSWER WAS READ AFTER 5 MINUTES BUT NOT LATER THAN 6 MINUTES:



YES  NO



LINE  NO LINE



If no line appeared in the Control Position the test did not work properly. Ask your doctor for further instructions.

Throw away used dropper and test device. Report to your doctor the information recorded:

- |                               |                      |  |  |
|-------------------------------|----------------------|--|--|
| • Lot number of test          | <input type="text"/> | • Was there a line in the test window?                           | YES <input type="checkbox"/> NO <input type="checkbox"/> |
| • Expiration date of the test | <input type="text"/> | • Was there a line in the control window?                        | YES <input type="checkbox"/> NO <input type="checkbox"/> |
| • Date urine collected        | <input type="text"/> | • Was the test read after 5 minutes but no later than 6 minutes? | YES <input type="checkbox"/> NO <input type="checkbox"/> |
| • Date urine tested           | <input type="text"/> |  |  |

**IMPORTANT:** Positive results may be caused by conditions other than bladder cancer. Your doctor will consider all factors in your diagnosis. This test will not always detect bladder cancer, so continue your regular visits to your doctor.

For technical services contact Lifesign at 800-526-2125 or 732-246-3366

Printed in U.S.A.  
P-5917  
516-9/30/11

EC REP  
**MT Promedt Consulting GmbH**  
Altenhofstrasse 80  
66386 St. Ingbert  
Germany  
+49-68 94-58 10 20

Manufactured by  
**PBM**  
Princeton BioMeditech Corporation  
4242 U.S. Hwy 1, Monmouth Jct.  
New Jersey 08852, U.S.A.

MF Manufactured for:  
**lifeSign**  
A PBM Group Company  
85 Orchard Road,  
Skillman, NJ 08558  
800-526-2125, 732-246-3366  
www.lifesignmed.com



# Status BTA

## Instructions For Home Use

### LifeSign, LLC

Doctor's Name \_\_\_\_\_ Phone Number \_\_\_\_\_

Patient's Name \_\_\_\_\_ Phone Number \_\_\_\_\_

Conduct a Status BTA test on (Date) \_\_\_\_\_

Caution: U.S.A. Federal law restricts this device to sale and distribution by or on the order of a physician, or to a clinical laboratory, and use is restricted to, by or on the order of a physician.

### Intended Use

**Status BTA** is to be used only under the guidance of a doctor and only by patients who have a history of bladder cancer. Your doctor will use the information from this test along with information from visual bladder examinations (Cystoscopy) to make decisions about your medical care.

### Notes And Precautions

- Read this entire brochure before starting the test.
- Do not use after the expiration date on the label. The expiration date is located on the back of the test device pouch next to the hour glass symbol ( ⌚ ). The use of an expired device could cause a wrong answer.
- Store the **Status BTA** test device at room temperature (60 - 85°F). Do not freeze or refrigerate the device or store above 85°F as this could cause a wrong answer.
- For in vitro diagnostic use only (do not eat). Keep out of reach of children.
- Collect urine only in the plastic container provided by your doctor. Do not use paper or foam cups or any other container as this could cause a wrong answer.
- Do not reuse the test device. Throw away after using once.
- Do not use a test device if the package is damaged or opened.
- Touch only the plastic part of the device. Touching any other part of the device could damage the test device or cause a wrong answer.
- Use a new dropper (provided with each device) for each test. Reusing a dropper could cause a wrong answer.
- The test has been designed to work with 3 drops of urine. The test will not work correctly unless 3 fully formed drops of urine are added to the sample well.

## Collection And Storage

Collect urine in the clean plastic container provided by your doctor. Do not use any other container for urine collection. **Do not collect your first morning urine sample.** Collect urine anytime of the day after your first morning urine. Test urine as soon after collection as possible. If testing can not be performed right after sample collection, cover the sample container and store urine at room temperature (60 - 85°F) until tested. Store urine sample covered up to 2 days if necessary.

## Materials Required

### Materials From Home



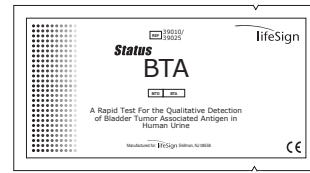
Stopwatch, clock, or watch that measures seconds



Pen or pencil

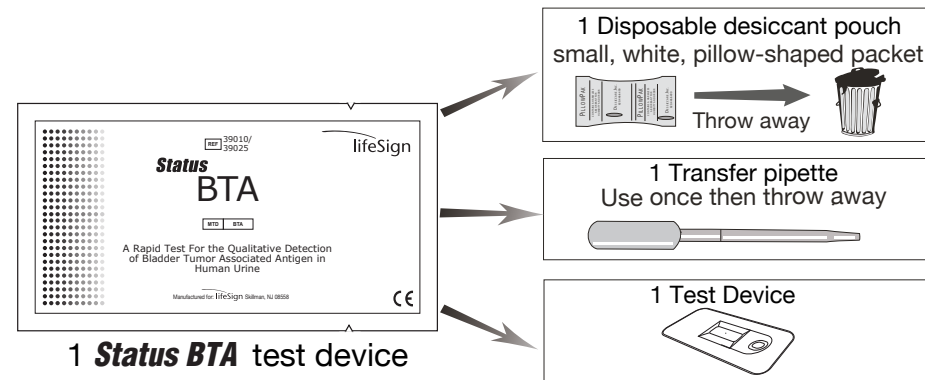


Collection cup (PLASTIC ONLY)

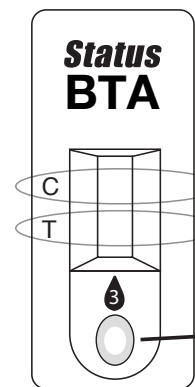


Status BTA test device

## Content Of Status BTA Test Package



## The Status BTA Test Device



### Control Position (C)

A line will form here to indicate that the test is working properly

### Test Position (T)

A line will form here if your test is positive; no line will appear if your test is negative.

### Sample Well:

Add 3 drops of urine here.

## Test Procedure

### Before starting the test:

Write the lot number of the test device here.



Lot Number

The lot number is located on the back of the test device package next to the symbol.

Write the expiration date of the test device here.



Expiration Date

The expiration date is located on the back of the test device package next to the symbol. The expiration date is shown in year (Y) - month (M) format, YYYY-MM; 2012-10 indicates that the device may be used until the last day of October in the year 2012.

1. Collect urine sample in the cup provided by your doctor.



Date Urine Collected

Date Urine Tested

Plastic only

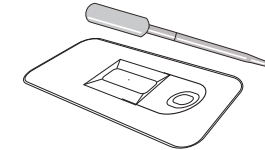


2. Open the test device package.

Remove the test device and dropper from the foil package.

Throw away the small white pillow-shaped desiccant pouch.

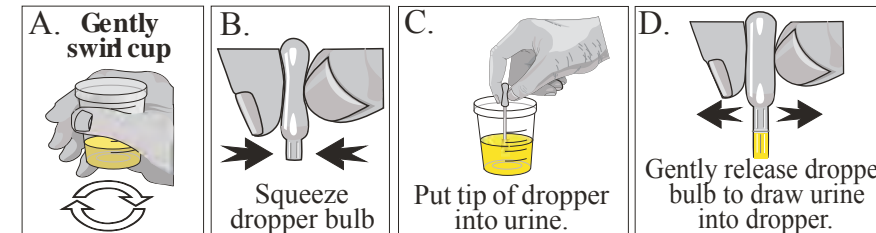
Place the device on a clean, well-lit, flat surface.



3. Prepare to time the test. Place stopwatch, clock or watch in front of you.



4. Mix the urine by gently swirling the sample cup. Fill the dropper with urine.

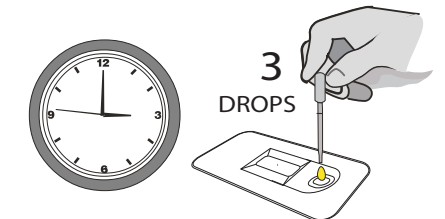


5. Hold the dropper upright above the sample well as shown.

Allow 3 FULL drops (without air bubbles) to fall into the sample well. Dropper tip should not touch device.

### START TIMING

NOTE: The test will not work unless exactly 3 FULL drops of urine are added to the sample well.



6. When 5 minutes have passed, read the answer within 1 more minute.



Read after 5 minutes but NO LATER THAN 6 MINUTES. DONOT read after 6 minutes, this may cause a wrong answer.

Turn the page and read about how to interpret the test result.